



P-Sea Software Co.

PO Box 1390

Morro Bay, CA 93443

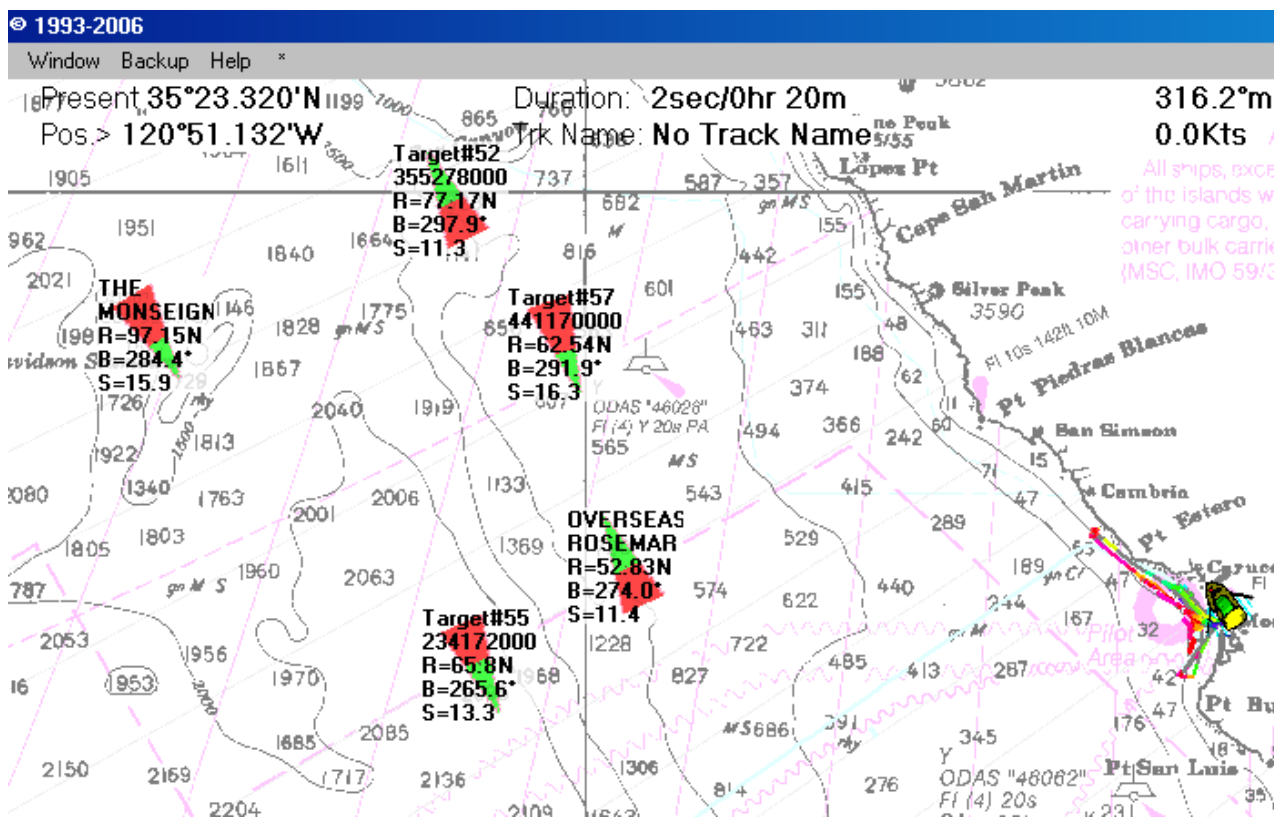
Ph (805) 772-4396 FAX (805) 772-5253

www.p-sea.com

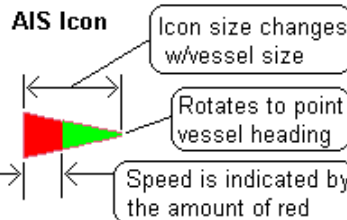
Email: info@p-sea.com

P-Sea WindPlot II AIS Option

What is AIS? The Automatic Identification System sends and receives data about the vessel(s) via a VHF radio on a timely basis. As shown below, data CAN consist of Lat./Long. Position, speed, heading, width, length, call sign, name, number of passengers, type of cargo, current status and so on. WindPlot II can use the NMEA0183 VDM (Vessel Data Message) sentence from a AIS receiver to display this data on the plotter screen so you can tell at a glance the vessel's size, speed and heading. Then further information can be obtained by simply placing the mouse arrow over the AIS target or by looking at the AIS/ARPA list.



The printing of the data overlaid on the icons above can be turned off so that just the icon is showing. Using just the icon, it is placed at the vessel's location, rotated to point it's direction, sized relative to the actual vessel size and the red portion increases with the speed of the vessel. This all allows you to quickly determine the AIS targets status at any time. AIS Vessel tracks can be saved into the track files.



P-Sea WindPlot II 7.11 or better, compatible AIS receiver/transceiver and an available RS232 COM port is all that is required. Sitex has a AIS Black Box Receiver available for just \$399.00 shown to the right here. Please note that no-one can get your location if you are just using the receiver but you can see where the big ships are to help avoid a collision. The AIS baud rate is 38,400 but there is a NMEA0183 @ 4800 baud rate feed wire that allows you to connect and combine GPS data with the AIS so no extra serial port is required.

