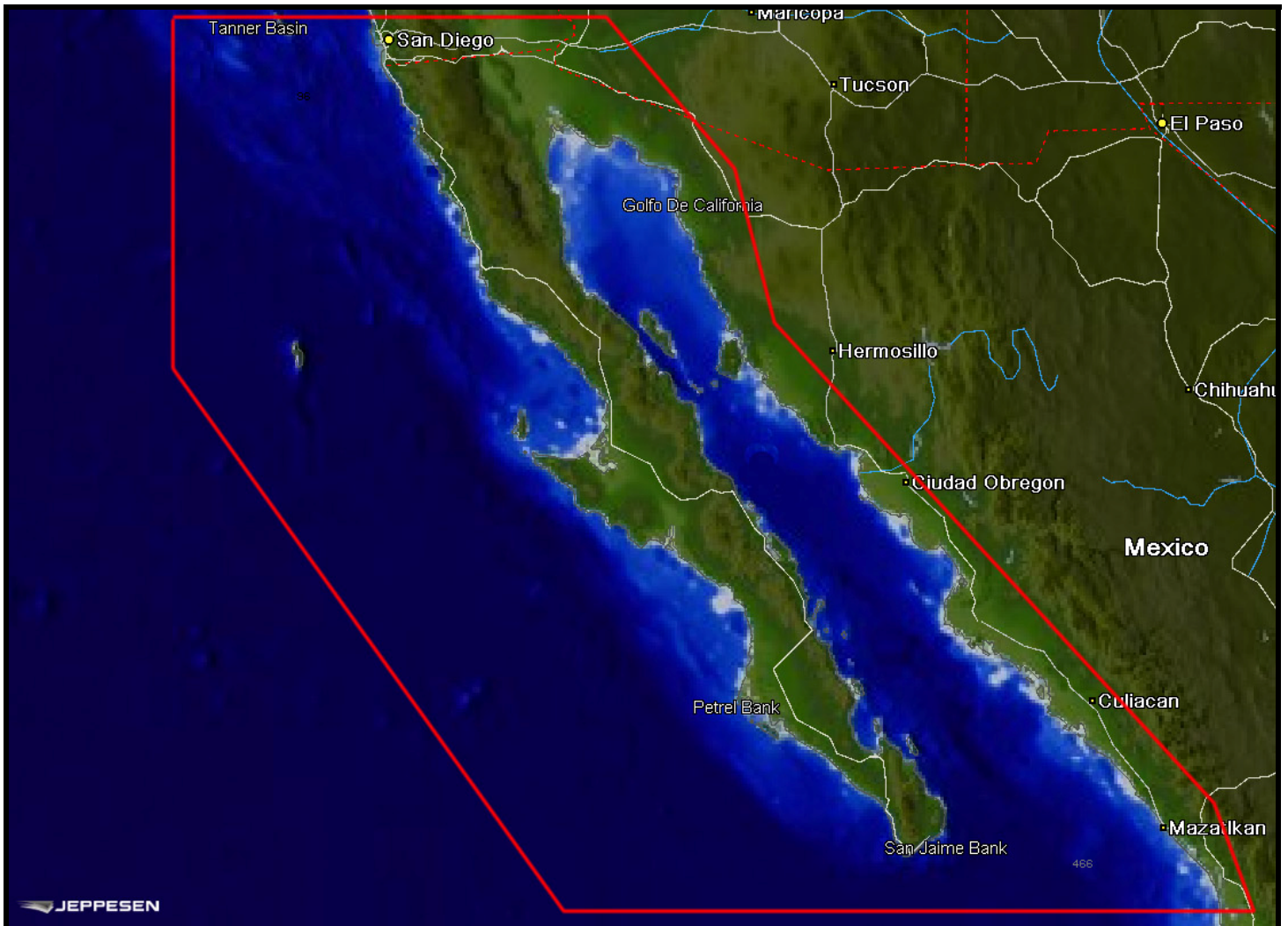


## MAX Product Release Document

**Product Code(s):** NA-M609.00  
**Pricing:** \$249  
**Product Title:** Baja Directions: Baja California  
**Product Description:** Baja Directions ([www.bajadirections.com](http://www.bajadirections.com)) is a provider of bathymetric and fishing information for the Baja California region of Mexico. An extremely popular area for sportfishing, and home to some of the most lucrative fishing tournaments in the world, this new product offers a boatload of improvements to this area including improved bathymetry, new C-Marina charts and popular fishing grounds and fishing "hot spots".  
**Coverage:** From San Diego, CA down the Baja coast to Cabo San Lucas, MX and all of the Sea of Cortez with coverage down to Las Tres Marias Islands just northwest of Puerto Vallarta.



NA-M609.00 Coverage Outline

**Bathymetric Details:**

33 ft intervals to 330 ft

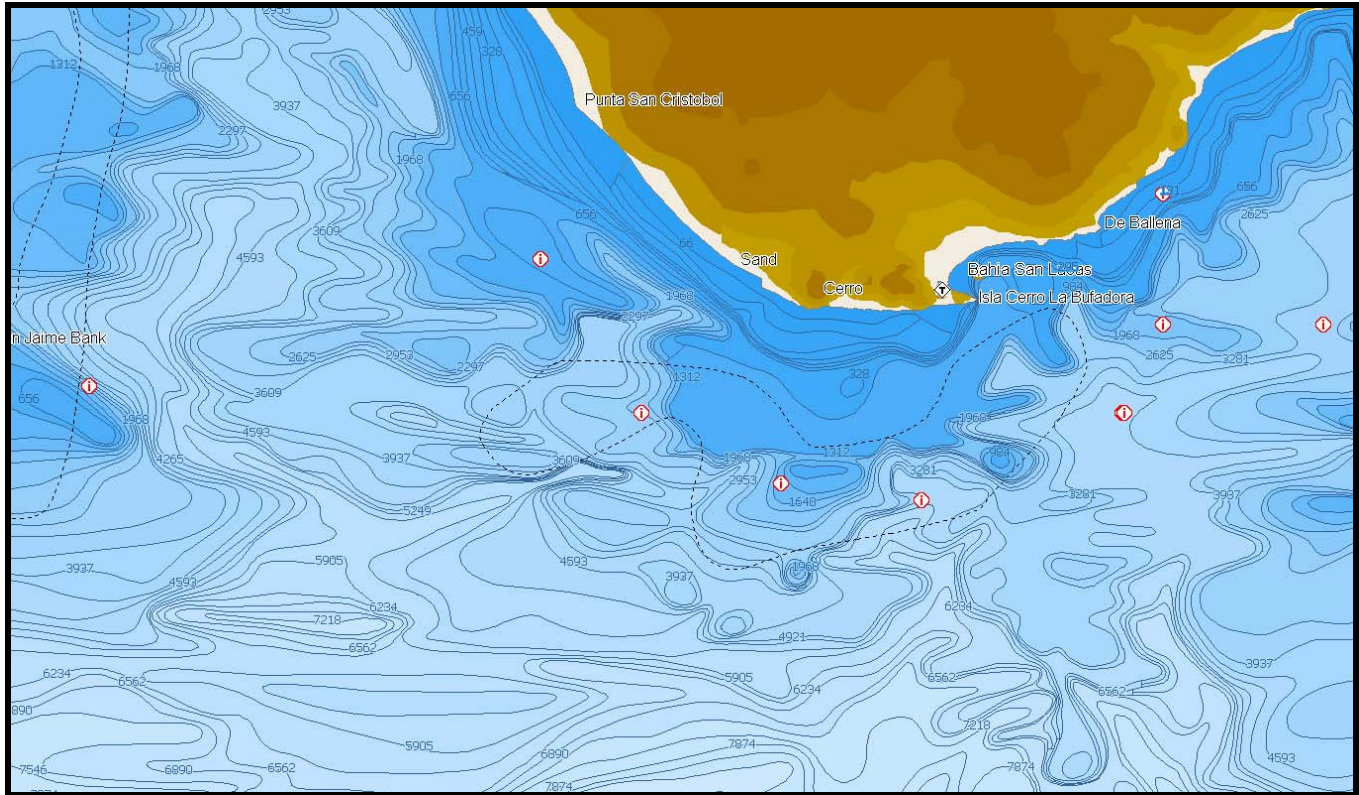
66 ft intervals to 660 ft

330 ft intervals over 660 ft

There are 33ft contours up to 2,000 ft in Ensenada (Bahia de Todos Santos)

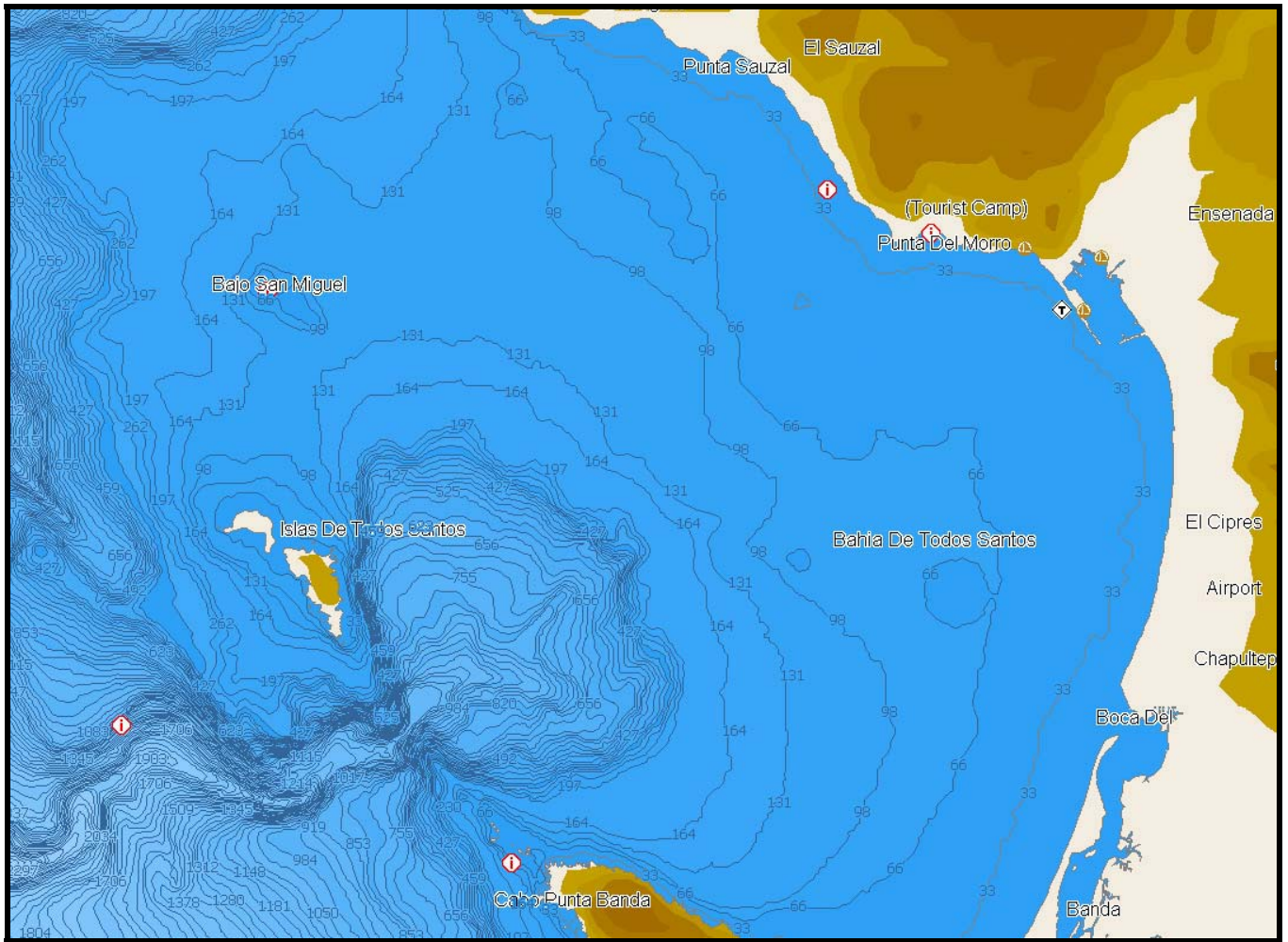
Four distinct levels of bathymetric charts providing detail from 5 nm down to 250 feet  
(Zoom levels will vary depending on plotter screen size)

Traditional bathymetric cards provide detail starting at 1 nm.

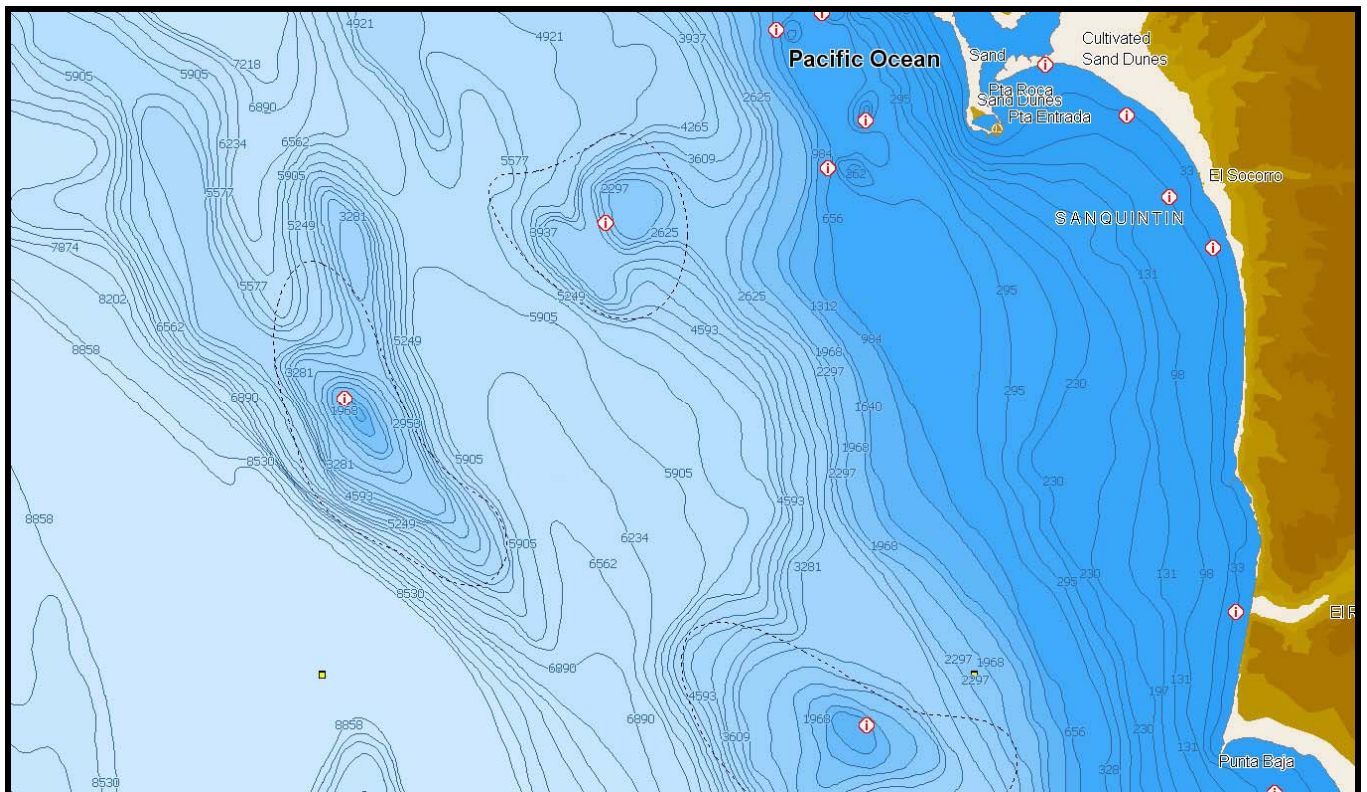


**NA-M609.00 Off Cabo San Lucas**



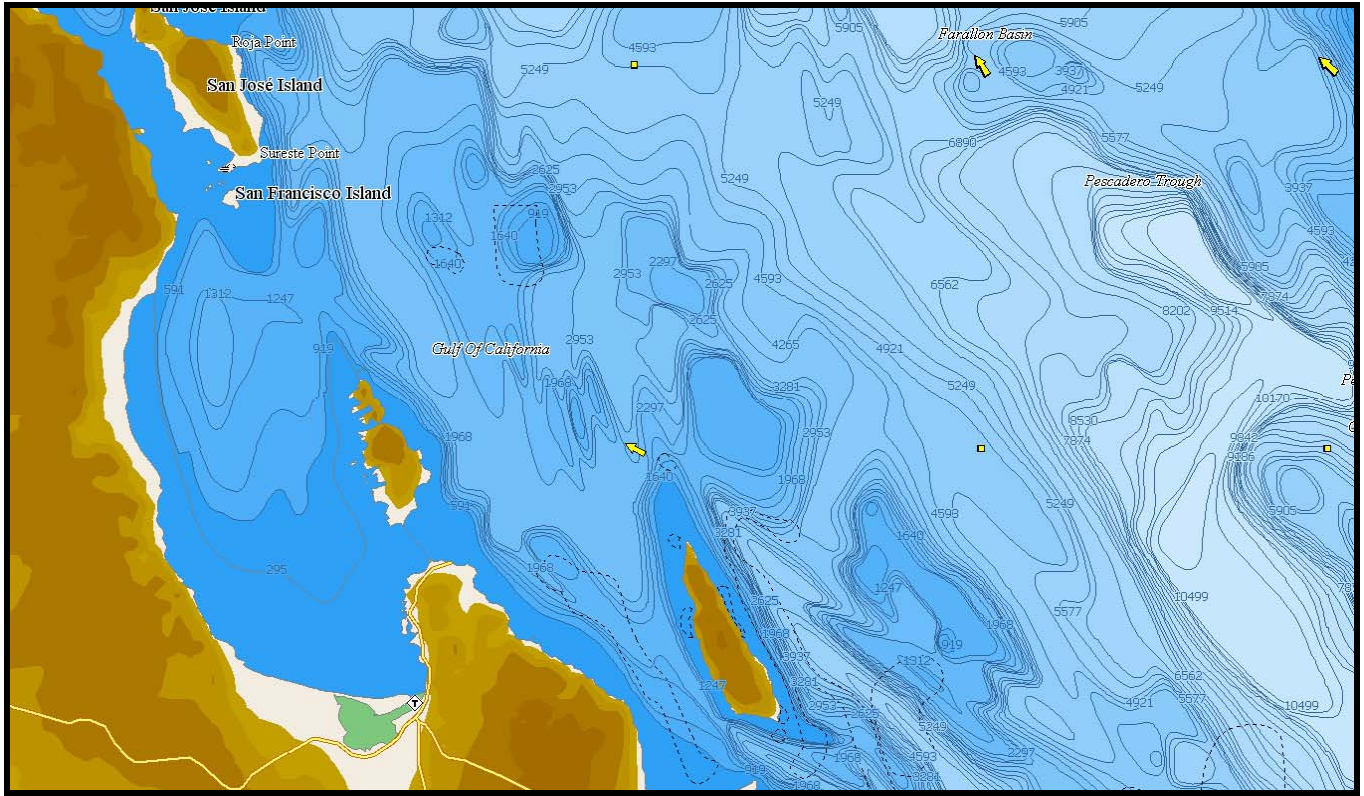


**NA-M609.00 Ensenada**

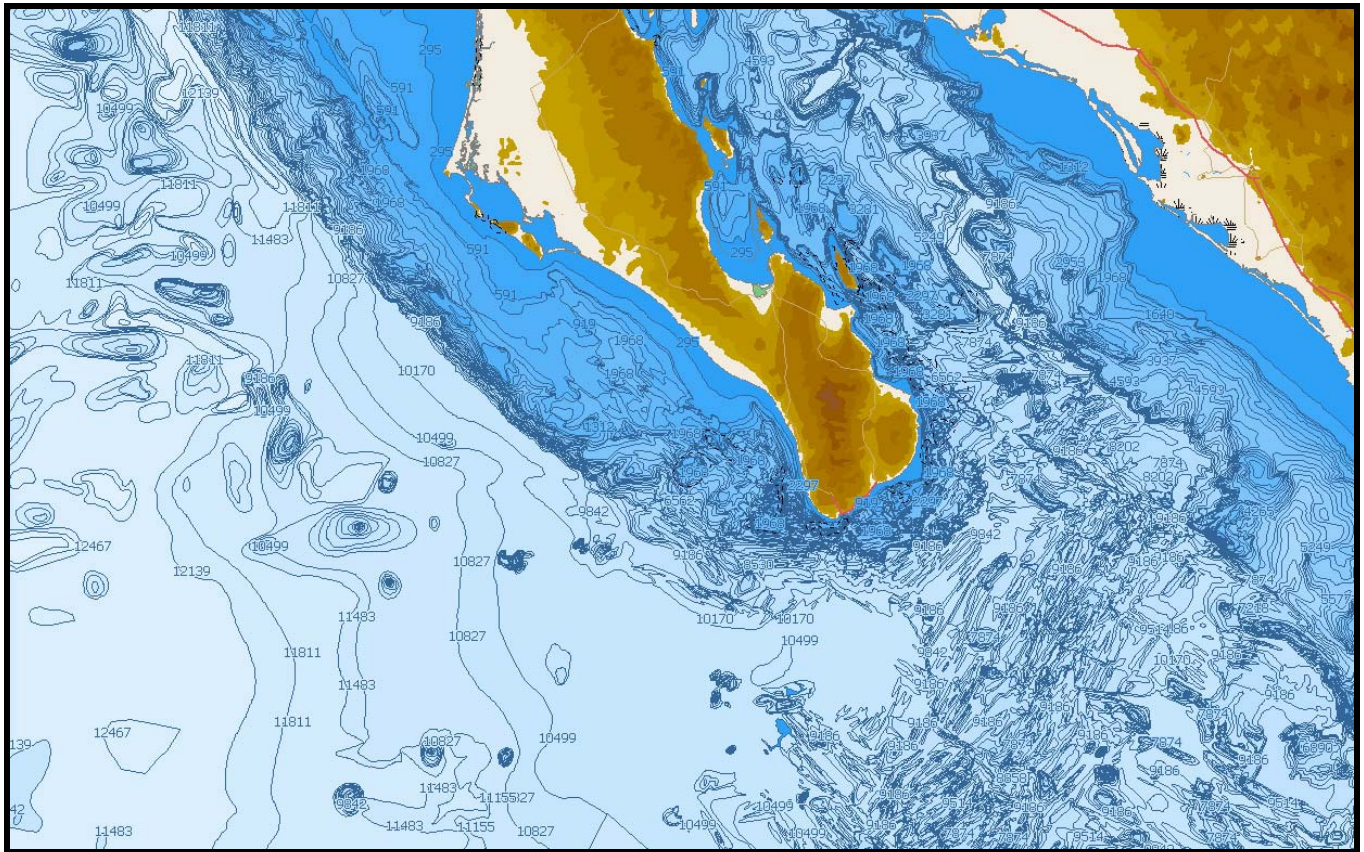


**NA-M609.00 Off San Quintin**





**NA-M609.00 Sea of Cortez off La Paz**



**NA-M609.00 Outer level zoom**

## **C-Marina Charts:**

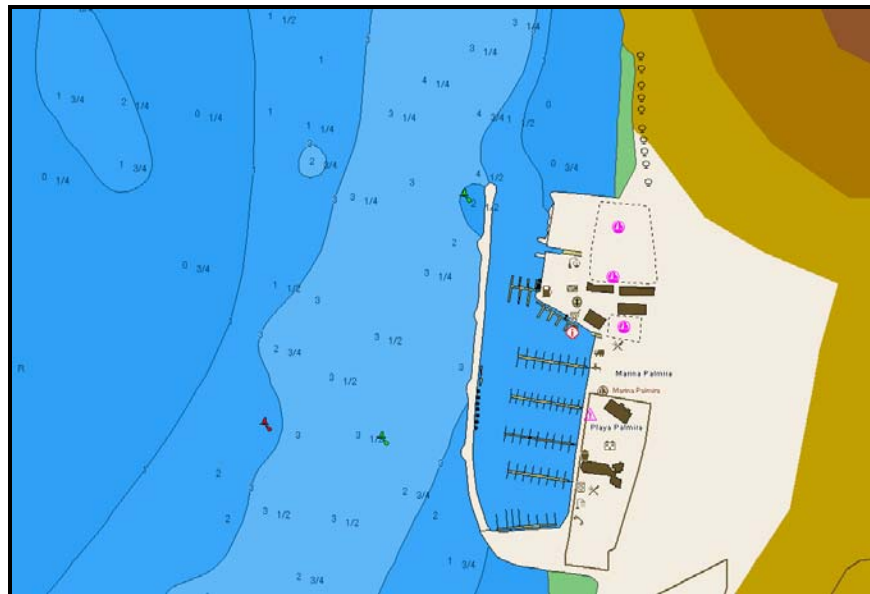
We added C-Marina detailed marina chart coverage for 14 important ports along the Baja California coastline:

1. Ensenada
  - a. Hotel Coral and Marina
  - b. Juanito's Boats
  - c. Baja Naval
  - d. The Marina at Ensenada
2. Bahia de Tortugas
  - a. Puerto San Bartolome
3. San Carlos
  - a. San Carlos Marina
4. Cabo San Lucas
  - a. Marina Cabo San Lucas
5. Puerto Los Cabos
  - a. The Marina at Puerto Los Cabos
6. La Paz
  - a. Club Cantamar Resort
  - b. Marina Pichilingue
  - c. Costabaja Marina
  - d. Marina Palmira
  - e. Marina de La Paz
  - f. La Paz Harbor
7. Santa Rosalia
  - a. Santa Rosalia Marina
8. Loreto
  - a. Loreto Marina
9. Bahia de Los Angeles
  - a. Villa Vita
  - b. Guillermo's
  - c. Casa Diaz
10. San Felipe
  - a. Marina Turistica San Felipe
11. Guaymas
  - a. Marina Real San Carlos
  - b. Marina San Carlos
  - c. Hotel Playa de Cortes
  - d. Delfinario Sonora
  - e. Marina Turistica Guaymas
12. Tobolobampo
  - a. Marina Palmira Tobolobampo
13. Mazatlan
  - a. Marina El Cid
  - b. Mazatlan Harbor
14. Puerto Vallarta
  - a. La Cruz Yacht Harbor
  - b. Marina de Nuevo Vallarta
  - c. Paradise Village Marina

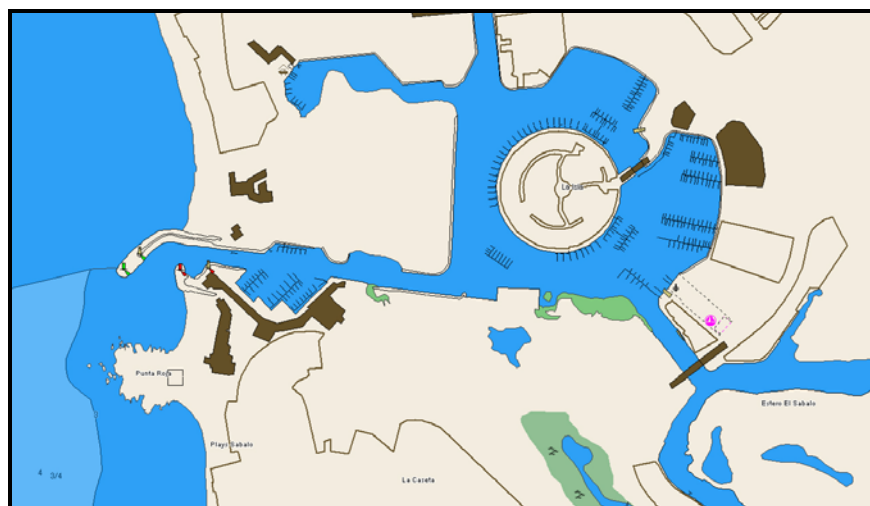




**NA-M609.00 Marinas in Cabo San Lucas**




**NA-M609.00 Hotel Palmira in La Paz**

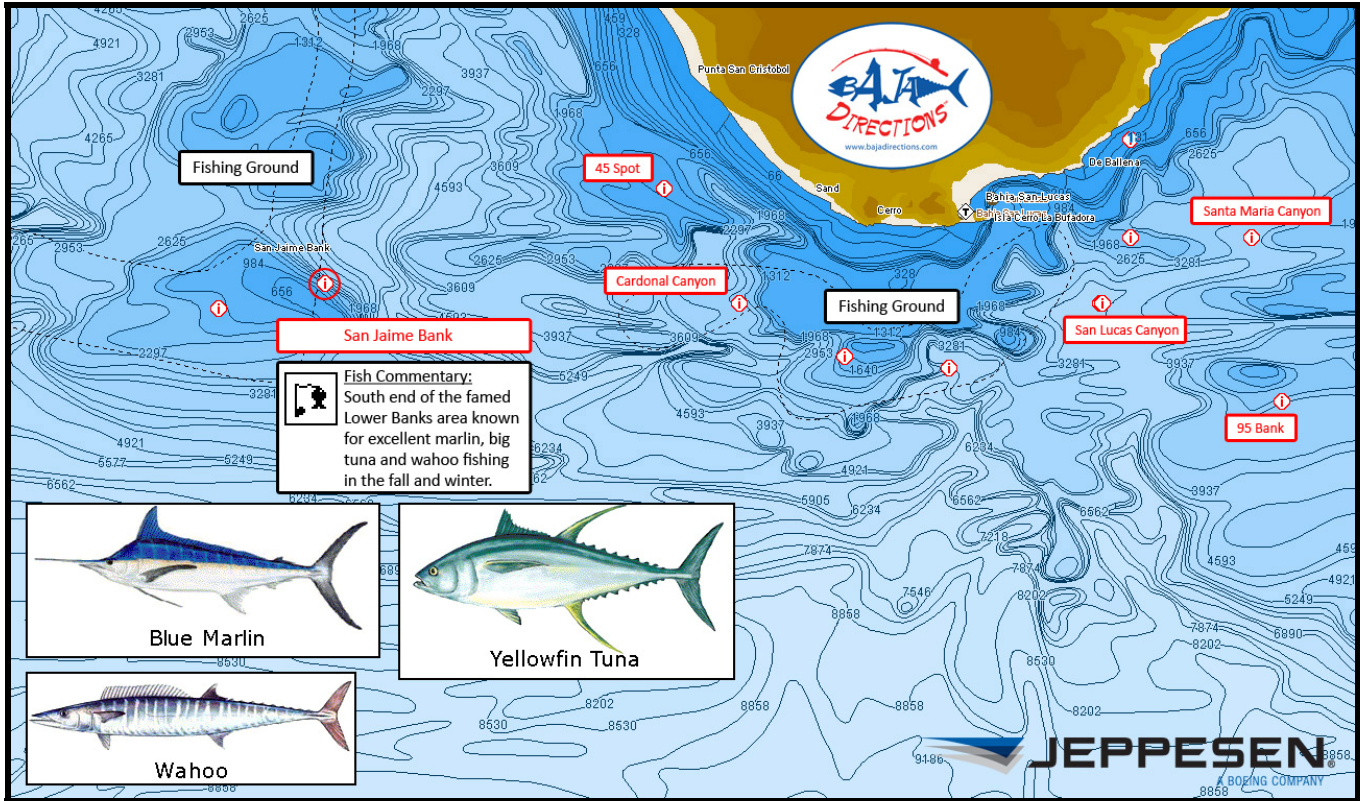


**NA-M609.00 Marina El Cid in Mazatlan**

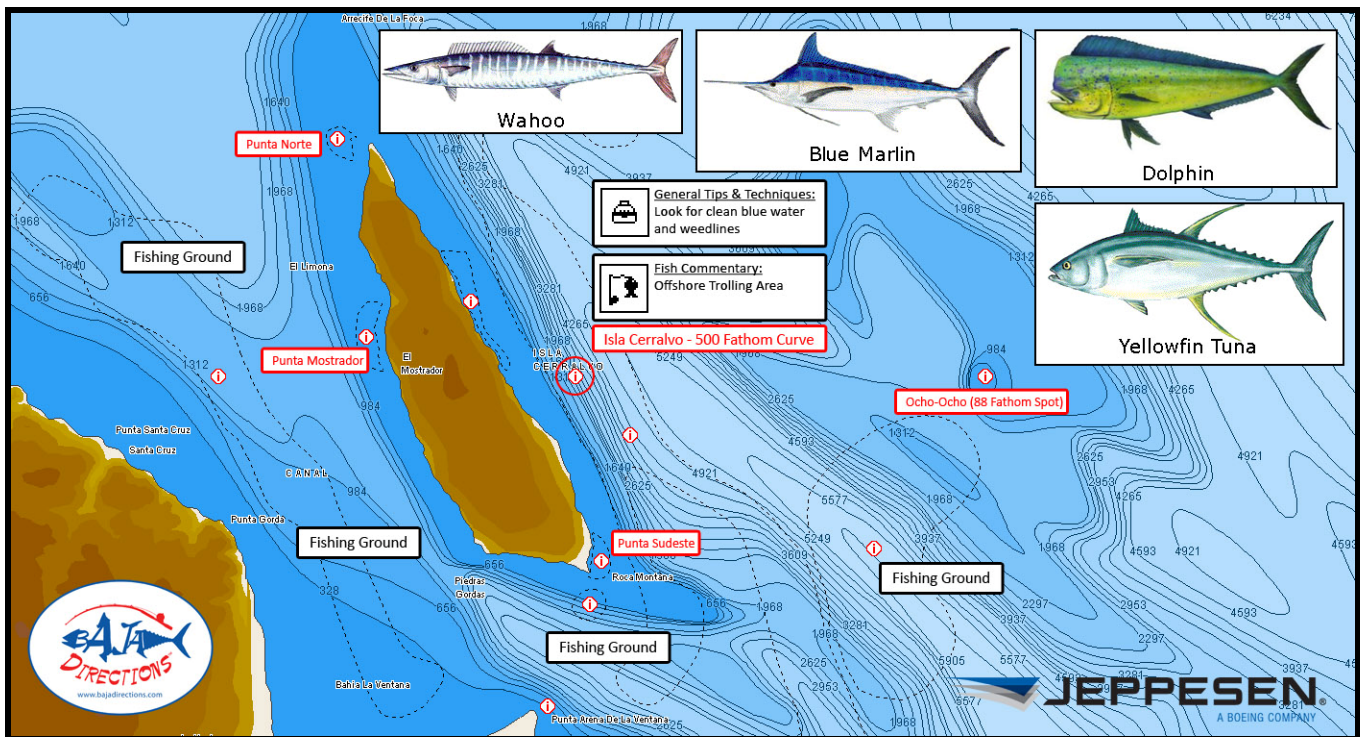
**Fishing Information:**

Baja Directions charts outline a dozen popular fishing grounds and more than 250 known fishing "Hot Spots". Each point contains the fish species present as well as any information on bottom structure or recommended fishing techniques.

In the image below, Fishing Grounds are outlined with the dashed black line, while the "Hot Spots" are marked with the  symbol.



**NA-M609.00 Fishing Grounds and Hot Spots south of Cabo San Lucas**



**NA-M609.00 Fishing Grounds and Hot Spots around Isla Cerralvo, Sea of Cortez**