

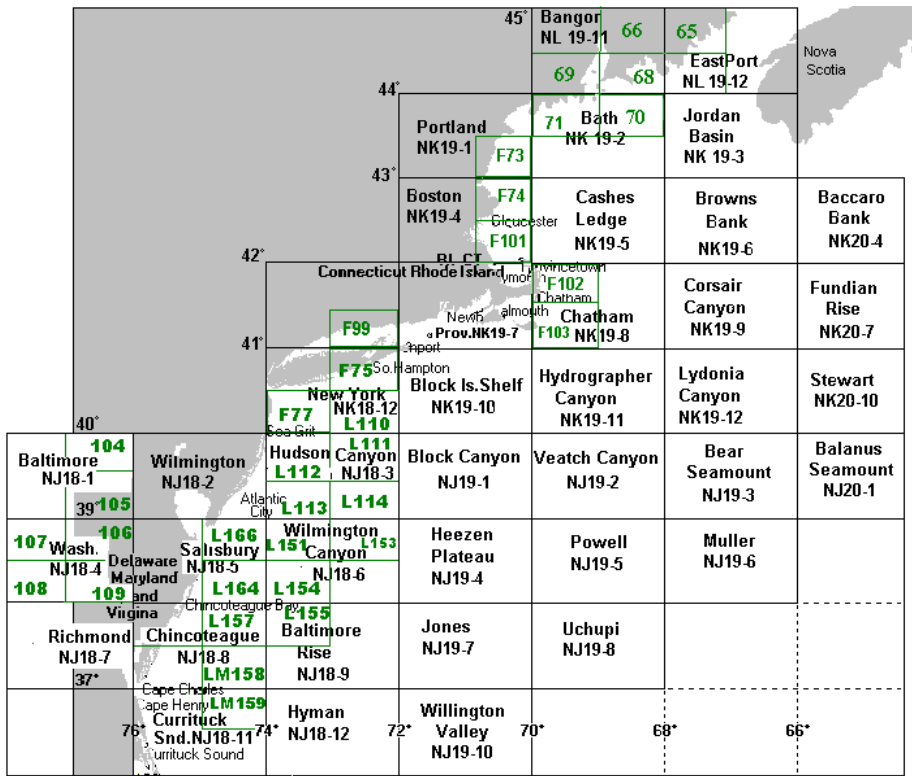
P-Sea Software Co.
PO Box 1390
Morro Bay, CA 93443
 Ph (805) 772-4396 FAX (805) 772-5253

US East Coast Bathymetric Raster Charts

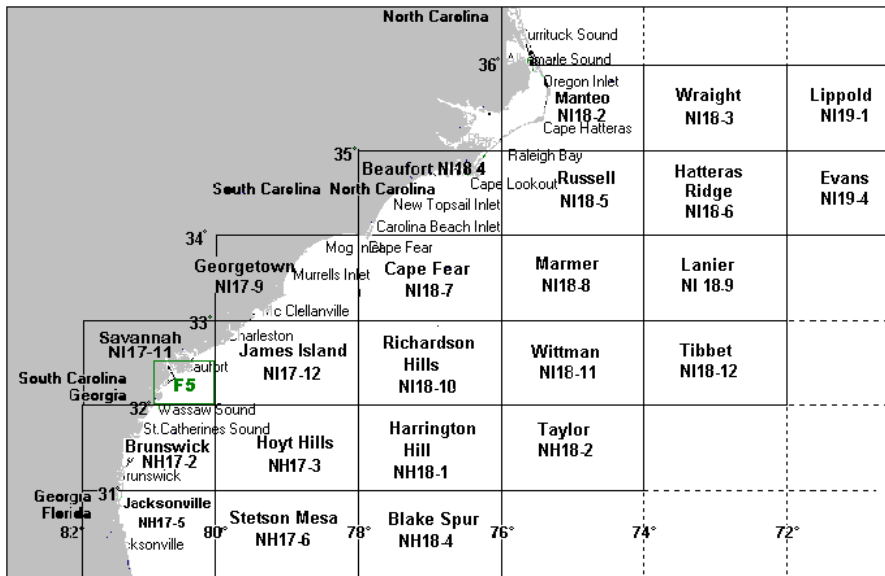
The charts listed below are produced by P-Sea Software by using a flat bed scanner. These charts will appear in the background of your plotter and will look exactly like the original paper chart.

The cost for each chart produced by P-Sea Software is \$49.95 US dollars.
 Available on CD or floppy. See other side for chart locations.

#	Description	Type	#	Description	Type
65	Beaufort(1:100k)	B&W <i>New!</i>	66	Bangor.(1:100k)	B&W <i>New!</i>
67	Petit Manan Pt.(1:100k)	B&W <i>New!</i>	68	Bar Harbor.(1:100k)	B&W <i>New!</i>
69	Augusta (1:100k)	B&W <i>New!</i>	70	Matinicus .(1:100k)	B&W <i>New!</i>
71	Bath .(1:100k)	B&W <i>New!</i>	104	York .(1:100k)	B&W <i>New!</i>
L105	Baltimore(1:100k)	B&W	L106	Washington E.(1:100k)	B&W
107	Washing W. .(1:100k)	B&W <i>New!</i>	108	Fredericksburg .(1:100k)	B&W <i>New!</i>
109	Leonardtown .(1:100k)	B&W	L110	New York SE(1:100k)	B&W
L111	Hudson C.NE(1:100k)	B&W	L112	Hudson C. NW(1:100k)	B&W <i>New!</i>
L113	Hudson C. SW (1:100k)	B&W <i>New!</i>	L114	Hudson C. SE (1:100k)	B&W <i>New!</i>
L151	Wilmgtn C.NW (1:100k)	B&W <i>New!</i>	L153	Wilmgtn C.NE (1:100k)	B&W <i>New!</i>
L154	Wilmgtn C.SW (1:100k)	B&W <i>New!</i>	L155	Bltimor RiseNW(1:100k)	B&W <i>New!</i>
L157	Chincoteague (1:100k)	B&W <i>New!</i>	L158	Norfolk Cyn. (1:100k)	B&W <i>New!</i>
LM159	Norfolk Cyn S. (1:100k)	B&W	L164	Fenwick Shoal (1:100k)	B&W <i>New!</i>
F5	Beaufort(1:100k)	Color	F17	Sanibel (1:100k)	Color
F18	Charlotte Hbr(1:100k)	Color	F73	Kittery(scale1:100k)	Color
F74	Gloucester(1:100k)	Color	F75	Long Is.East(1:100k)	Color
F77	Long Branch(1:100k)	Color	F86	Sarasota(1:100,00)	Color
F99	New Haven(1:100k)	Color	F101	Provincetown(1:100k)	Color
F102	Chatham (1:100k)	Color	F103	Siasconset (1:100k)	Color
NK18-12	New York	B&W	L166	Cape May (1:100k)	B&W
NK19-1	Portland	B&W	NK19-2	Bath	B&W
NK19-3	Jordan Basin	Color	NK19-4	Boston	B&W
NK19-5	Cashes Ledge	Color	NK19-6	Browns Bank	Color
NK19-7	Providence	B&W	NK19-8	Chatham	Color
NK19-9	Corsair Canyon	Color	NK19-10	Block Island Shelf	Color
NK19-11	Hydrographer Canyon	Color	NK 19-12	Lydonia Canyon	Color
NK20-7	Fundian Rise	Color	NK20-4	Baccaro Bank	Color
NK20-10	Stewart	Color	NJ18-12	Hyman	Color
NL19-11	Bangor	B&W	NL19-12	Eastport (Fundy Bay)	B&W
NJ18-1	Baltimore	Color	NJ18-2	Wilmington	Color
NJ18-3	Hudson Canyon	Color	NJ18-4	Washington	Color
NJ18-5	Salisbury	Color	NJ18-6	Wilmington Canyon	Color
NJ18-7	Richmond	B&W	NJ18-8	Chincoteague	Color
NJ18-9	Baltimore Rise	Color	NJ18-11	Currituck Sound	Color
NJ19-1	Block Canyon	Color	NJ19-2	Veatch Canyon	Color
NJ19-3	Bear Seamount	Color	NJ19-4	Heezen Plateau	Color
NJ19-5	Powell	Color	NJ19-6	Muller	B&W
NJ19-7	Jones	Color	NJ19-8	Uchupi	B&W
NJ19-10	Wilmington Valley	B&W	NJ20-1	Balanus Seamount	B&W
NI17-11	Savannah	Color	NI17-12	James Island	Color
NI17-9	Georgetown	Color	NI18-3	Wraight	Color
NI18-1	Rocky Mount	Color	NI18-2	Manteo	B&W
NI18-4	Beaufort	Color	NI18-5	Russell	Color
NI18-7	Cape Fear	Color	NI18-6	Hatteras Ridge	B&W
NI18-8	Marmor	Color	NI18-9	Lanier	B&W
NI18-10	Richardson Hills	Color	NI18-11	Wittman	Color
NI18-12	Tibbet	B&W	NI19-1	Lippold	B&W
NI19-4	Evans	B&W	NH17-2	Brunswick	Color
NH17-3	Hoyt Hills	Color	NH17-5	Jacksonville	Color
NH17-6	Stetson Mesa	Color	NH18-7	McAlinden Spur	Color
NH17-8	Daytona Beach	B&W	NH17-9	Adams	Color
NH17-11	Orlando	B&W	NH17-12	Pillsbury	Color
NH18-1	Harrington Hill	Color	NH18-2	Taylor	Color
NH18-4	Blake Spur	Color	NG17-2	Fort Pierce	Color
NG17-3	Walker Cay	Color	NG17-6	Bahamas	Color
NG17-8	Miami	Color	NG17-9	Bimini	Color
NG17-11	Key West	Color	NG17-12	Andros	Color



*P-Sea Software
Bathymetric Charts
(New Higher Resolution!)
US East Coast*

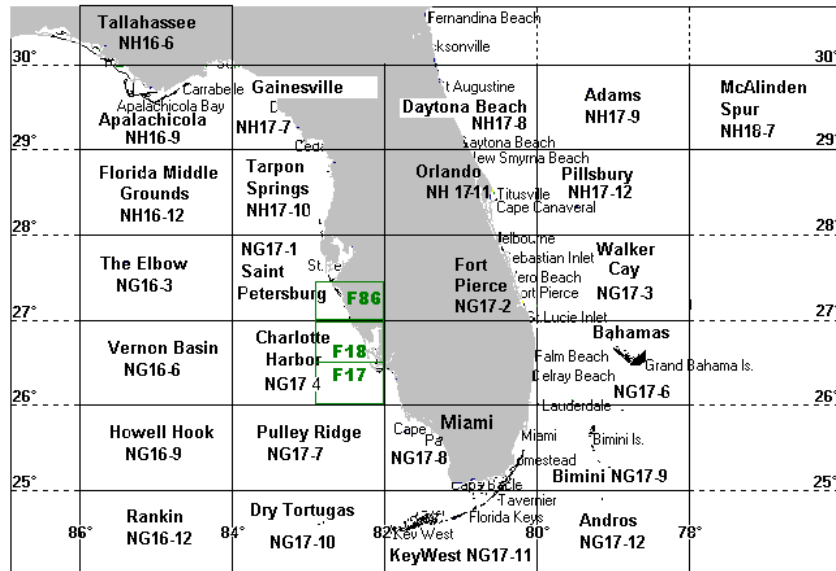


All chart #'s in green have a scale of 1:100,000 and cover 1 degree of Longitude and half degree of Latitude. The rest have a scale of 1:250,000. They are in black covering 2 degrees of Longitude and 1 degree of Latitude.

Chart #'s in green that start with "F" are considered FISHMAPS. They are in color, have bottom characteristics.

Chart #'s in green that have a "L" in front are in black & white with Loran-C overlay.

Chart #'s in green with no letters in front are uncompleted bathy. charts with some written bottom detail and in black & white.



08-03-2007