



P-Sea Software Co.
PO Box 1390
Morro Bay, CA 93442 USA
Ph (805) 772-4396 FAX (805) 772-5253
E-mail: info@p-sea.com
Web: www.p-sea.com

Version 7.27 Improvements

Dragging Multi-Screens

In the past to setup multiple monitors you had to select witch direction you wanted the program to go to. Now you just drag the title bar. Just make sure when you release the screen that the upper-left corner of the screen you are dragging is visible in the new monitor. FYI: When you restart WindPlot you can have the same options launched to the same places you had setup last time you ran WindPlot if you check the "USE LAST SETUP" checkbox in the WindPlot "Auto-Enter" startup window that appears when you first start WindPlot.

AIS CPA no longer has to have tracking on to work

In the past you had to have both Vessel and AIS tracking turned on and at lower durations for the AIS CPA to work. This new version uses a separate tracking for CPA that works in the back ground so that you no longer have to keep tracking when you do not want to.

COM ports improved

Reworked on COM port window so that USE OLD COMM DRIVER or USE NEW COMM DRIVER is now just a single check box "USE OLD COMM DRIVER" and no longer requires you to restart WindPlot. Some other improvements made that are not visible that should make it work better as well.

Lat/Long Fonts adjust with button size now

Set TK Max.hard-CB Max added to Track Multi-Color window.

If you are using bottom hardness feature of WindPlot you can now just click the **Set Tk max.hard=CB max** and whatever the current maximum hardness value in the current track is will be set as the upper-limit of the track color bar. You must have the current track mode as HARDNESS and the track set to record in Multi-Color and this button will appear when you open the track color window by pressing **F3** on the keyboard.

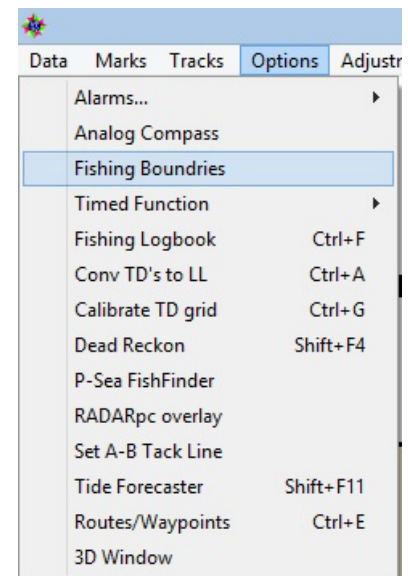
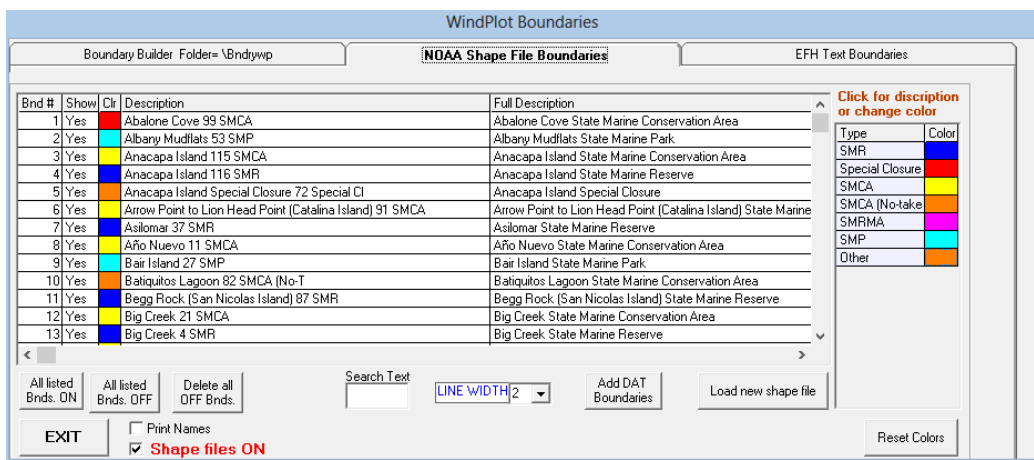
Right-Click on Marks or Tracks button in 3D full screen to turn them off.

VMS track PDF import

Located in the *Track Search & Edit* window ("From Tracks menu"), this option to import VMS PDF document that has be loaded into a PDF conversion program and save as a simple text file and it will be added when clicking the **Import** menu then select **VMS PDF Text file**.

Boundary Builder has moved and two new types of boundaries were added.

Boundary builder has moved from the MARKS menu to the OPTIONS menu and renamed FISHING BOUNDARIES since we added a couple of new types of boundaries and they are all related to fishing boundaries. Click on FISHING BOUNDARIES and you will get the window shown below:



Click the tabs on the top to select a type of boundary. The first tab is the old BOUNDARY BUILDER and works same as before so we will not be going into any detail on this. The next one NOAA SHAPE FILE BOUNDARIES import a data file called SHAPE FILES that the NOAA government is using. Currently the California MPA's are the only files we have received for this type of boundary. The one on the right EFH TEXT BOUNDARIES are EFH or Essential Fish Habitat boundaries. So far we only have files for the west coast of the USA but we are working on it. Please ask your local authorities to help us get more information on this.

The NOAA Shape File Boundary

Adding SHAPE boundaries

The installation CD comes with shape files on it. To add one of these files just open the NOAA Shape File Boundary window 1) Click on WindPlot's OPTION menu and select FISHING BOUNDARIES then select the center tab at the top by clicking on it.

2) Now place the install CD in the drive (cancel out any thing that pops up) and then click on "LOAD NEW SHAPE FILE".

3) Navigate to the CD player on your computer and locate the **MPA_CA_Existing_130101_GCS_WGS84** folder and double-click on it.

4) Click on one of the files with a SHP extension and click on OPEN.

(The CA MPA is called "MPA_CA_Existing_130101_GCS_WGS84.SHP

5) It will ask if you want to add these file, just click on "YES" and the files will be uploaded.

Turning Shape boundaries on and off.

You can turn all boundaries on or off by clicking the buttons "ALL LISTED BNDRY ON" to turn them all on or "ALL LISTED BNDS. OFF" to turn them all off. Then click the "SHOW" column to turn an individual boundary on or off. They will only display on the plotter screen when they have YES in the SHOW column.

Changing colors: You can change colors of any boundary by clicking on the color column and then click on the desired color.

Searching for a certain boundary. You can do a text search by typing in any relevant text in the "SEARCH TEXT" box and any boundary that has that text anywhere in the boundary description will be listed. Just delete the text to list all boundaries again.

Display a boundary: You can quickly zoom to any boundary by double-clicking on the boundary number in the first column of any boundary. Then the boundary list closes and the cursor is turned on and placed at the location of the boundary.

Displaying the boundary name: If you check the box labeled "PRINT NAMES" then a short description for each boundary will be displayed on the plotter screen.

AIS Ship-Type Color mode: Check the "Type Colors" check box found in the AIS/ARPA window to have the different types of ships like Tankers (Black) and Cargo Vessels (Yellow) show up in different colors in the AIS icon that is displayed on the plotter screen. The target icon will still indicate vessel speed by the amount of red in the icon but the green portion of the icon will change to what ever color the type of ship is according to the list show to the right here.

Ship Type & Color
Passenger ship
Search & Rescue
Cargo Ship
Military Ops
Fishing/Base
Tug/Towing
Dredge/Diving
Pleasure/Sailing
Pilot Vessel
Tanker
Law Enforcement
No contact >6 min.
Anything else