

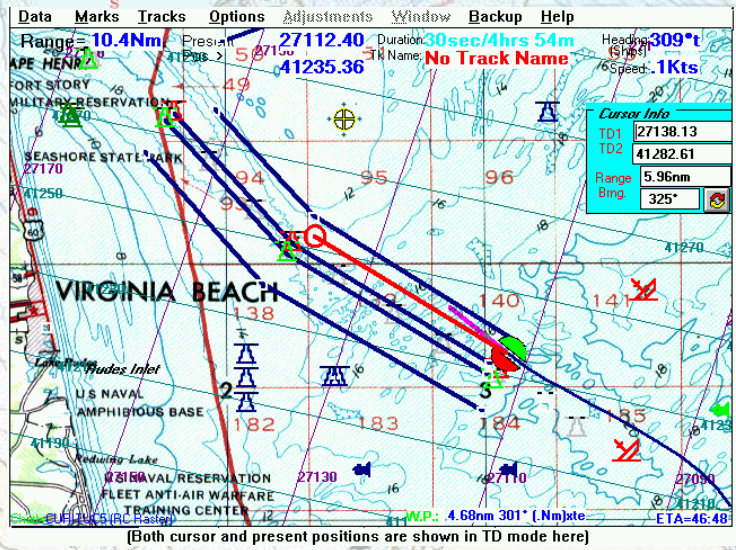


# Computer Software for the Commercial Fisherman

## P-Sea WindPlot

### Commercial Plotter w/ Accurate Loran TD's

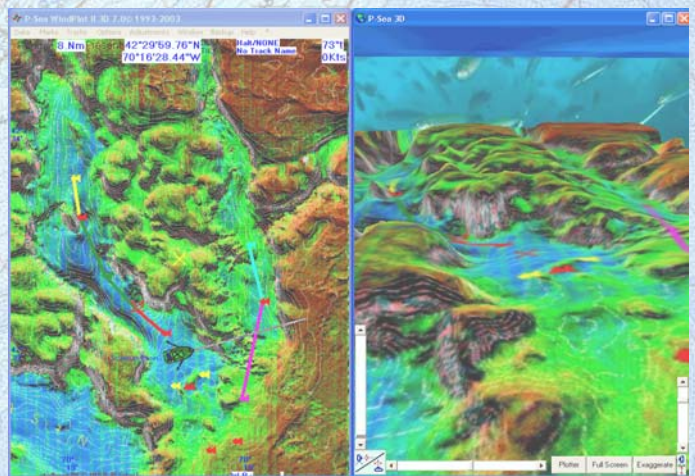
*If you have a computer on board or you're thinking of getting one, then you'll want this Windows program; it turns an ordinary IBM PC into one of the most powerful plotters you can own! It includes program CD, operation manual, keyboard shortcut decal and interconnect cable to hook up to your GPS!*



**T AIS Display Option** for display of other ships around you. T Displays *ANYTHING* in TD's or L/L. T Accurate TD's even with a GPS running it. T Display Marks, Hangs, Present & Cursor positions all in TD's including TD grid overlay, using any GPS w/optional **ASF automatic Loran-C correction table**. T Records and tracks in color according to biomass, hardness and roughness (this OPTION requires a P-Sea FishFinder or JRC sounder). T Charts compatible with our software: Navionics XL3 Gold, C-Map vector charts, P-Sea seamless raster bathy. (*AVAILABLE IN HIGH RESOLUTION!*), Maptech, NOAA/BSB and CHS/NDI. T Records depth or water temperature into marks and/or tracks. T Graphical 3D XTE display. T With an external radar interface, can automatically track radar (or ARPA) targets & manually plot radar and sonar targets. T P-Sea Radar option will overlay radar targets over your charts and automatically record target tracks of other vessels. T Program can split the display into multiple plotter screens and overlay bathymetric charts on top of navigation charts. T Easy operation & built-in manual with hyperlink help for every step of the plotter operation. T Unlimited mark storage, 10 *user defined* symbols, 125 different colors, with adjustable sizes. T Unlimited track storage; each with name that ID's it on the plotter screen and 5 descriptions. T Marks, waypoints & routes with XTE, TTG, Range & Bearing can be set either by numerical entry or point-&-click. Select up to 92 track colors or change them automatically with (up to 3 at-a-time) speed, temp., time, depth, biomass, hardness and roughness. T Selectable track widths and 5 different (categorized) descriptions. T On-Screen editor allows for point-&-click type editing of marks and tracks. T Human voice announces all functions, such as speed & heading.

## P-Sea WindPlot II 3D

This option allows you to see your charts contoured to show what the bottom actually looks like. Bottom contours can be exaggerated for a better 3D effect. The 3D chart follows and updates as vessel moves. Track & marks all appear on the 3D screen. Use the provided 3D data base or connect your depth sounder to create your own 3D view with the P-SeaBed builder option. See our website: [www.p-sea.com](http://www.p-sea.com) for more 3D screen shot samples, chart coverage and computer requirements. Demo's are now available on CD.

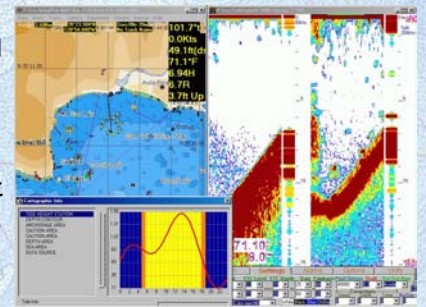


## P-Sea FishFinder Option

P-Sea FishFinder has all of the functions of a commercial class 1000 watt dual-frequency sounder plus bottom hardness, roughness and biomass readouts. Requires CVB-20A Black Box Module (*PRICE REDUCED!*)

## P-Sea WindPlot MAX

P-Sea WindPlot MAX is a cousin to WindPlot II except with C-Map chart compatibility. It has the exact same features as WindPlot II with extras like tides, currents, depth contours in feet, fathoms or meters and more.



# P-Sea WindPlot II/MAX Specifications

## GENERAL SPECS

Resolution	1/1,000 or 1/10,000 of a minute.
Colors	Up to 124 customizable mark and up to 124 customizable track colors.
Ranges	Adjustable, .1 to 3000 miles (Non-raster mode).
Position Icon	Choice of 11 pointing boat-shaped icons or flashing dot(s).
Heading line	Adjustable width and length. Length is fixed or can self-adjust with time or plotter range.
Range Rings	Place 4 user adjustable range rings around the vessel.
Instant backup	Backup of important data by single item on menu.
Dead Reckoning	Simulated ship movement. Automatic when NAV receiver fails.
Security Code	Code entry required to start program and password data protection.
Alarms	Anchor, mark proximity, waypoint X-track, waypoint arrival, nearest land, on color, off color, Depth, Temperature, speed and A-B line (also optional: biomass, bottom hardness, roughness and more).
Timed Events	Noisy crab walks across screen at time - user must click mouse to disengage (3 modes), distance interval, wake up to "Oh-Oh" and event calendar timer to notify you of oil changes due, etc.
Chart-Compatibility	Raster or vector; displays user made or pre-made vector charts from P-Sea Software Co. or Navionics. Displays FREE BSB navigation, Coastal Topo, NavPhoto, C-Map or Navionics Vector charts, or our seamless bathymetric raster. Overlays BSB type navigational charts over P-Sea bathymetric charts.
Charts Included	Includes vector outline of the world on ranges > 500nm. FREE BSB Raster charts(specify region at order)
Chart Display modes	North up. (Course up available when using any SoftChart, BSB format or Navionics charts.)
Tide Forecaster	Now includes Tide forecaster with a seven day Hi/Low times or Plot of tide times for most major ports.
Split Screen	Split the screen to show any chart type and range on either screen with independent panning.
Digital voice	A human voice will announce any plotter function such as heading, speed and alarms at any interval.
A-B tack Line	Sets a line between two marks to follow with range & bearing on either end.
3D XTE	Cross-track error is graphically displayed in a 3D background.
Boundary Builder	Create fishing zones easily using existing marks, Lat/Long (or TD) positions or point-and-click. Each boundary is a separate file and independent of marks with individual colors, widths & descriptions. This option comes with one 3D chart. 3D charts are sold by region, ask for 3D brochure w/chart outlines.
P-Sea 3D Option	Connects to a Koden RADARpc. A full-functioning radar with chart overlay w/North, Course & Heads-up.
P-Sea FishFinder Option	Automatically track up to 99 targets from the P-Sea Radar Option. Saves tracks in WindPlot II/MAX.
P-Sea Radar Option	Both P-Sea Radar and P-Sea ARPA are built in WindPlot, but require purchase code#'s and a Koden Radar.
P-Sea ARPA Option	Interfaces existing w/ARPA radar targeting systems to provide tracking up to 99 nearby vessels.
Radar Tracking	Display the closest land to vessel anywhere in the US mainland, Hawaii or P-Sea world chart.
Near Land	Create your own custom mark and waypoint symbols.
Mark Editor	Convert TD's to Lat/Long to be stored and displayed as a line, mark or waypoint.
TD Storage	Mark list, present & cursor positions can be displayed in TD's as well as Latitude/Longitude.
TD Display	Generates TD overlay automatically anywhere Loran C is available (loran not required).
TD Overlay	Optional TD ASF automatic correction table is available so you can use GPS with TD hangs.
TD Correction	The cursor can display L/L or TD position, range & bearing from vessel (or mark), track name, description, speed or depth of any mark, or track point, or to zoom to any chart location.
Cursor	Two button bars provide short cuts to popular functions.
Button bars	Floating, resizable analogue compass window displays all navigation info. in large letters.
Analog Compass	Hypertext* help serves as built-in manual and instant on-line instructions. *(not avail.for Win 7 or 8)
Help	A help window automatically pops up on all point & click hot spots.
Temp. Graph	Display temperature graph over plotter screen if a digital temperature gauge is connected.

## TRACKS (can be shared with other WindPlot or WindView, I or II/Max programs)

A.I.S. Option	Track many vessels at once with compatible VHF AIS receiver. Displays speed, heading, boat name and more.
Points	Adjustable 10 - 2000 per track.
Description	56 letter description per track, easily changed and can be divided into 4 custom columns.
Disk Storage	Number of tracks are only limited to memory available on the computer.
Names	One name per track (11 character's) that can be displayed at the beginning of the track.
Track Colors	Single or multi-color. Manual or automatic select according to temperature, speed, time or depth.
Seabed classify	Seabed OPTION allows color tracking of Bottom hardness (includes bar graph) using our P-Sea FishFinder.
Track Width	Each track has its own width (15 widths available)or Tri-Tracks when 3-types of data is tracked.
Plot intervals	2, 10 or 30 seconds; 1, 5, & 10 minutes; or .003, .01, .05, .1, .3, .5, 1, 2, 5 miles.
Modes	Continuous (one solid line)or Non-Continuous where track line is not connected while halted.
Track Editing	Partially erase any part of a track or merge two tracks into one.
Track copying	Copy groups of tracks by range, color, description or one-at-a-time.

## WAYPOINTS/MARKS (can be shared with other WindPlot or WindView, I or II/Max programs)

Maximum Marks	Limited to memory available or up to 1 billion marks/file. Any mark can be selected as a waypoint.
Description	77 character description for each mark with 4 custom columns. Any new mark made can be automatically added to a track name with numbering, TD's, Date and time, depth or temp.
Printing	Any portion of a marks description can be displayed next to the mark. Display depth or temp. automatically each time a new mark is made.
Routes	Easy menu provides for creating and erasing routes numerically or by point-&-clicking.
Waypoint line	The color and width of heading line that guides ship to next waypoint is user adjustable.
RB Calculations	Performs normal or Great Circle range & bearing calculations.
Instant marks	Make a new mark by right-clicking the mouse button or pressing either button on a game pad. Program nearly any key on the computer keyboard to make any mark when pressed.
Linking	Marks can be linked together with an adjustable width line in yellow or the mark color.
R/B Flags	Labels placed next to any mark to indicate the current range/bearing from the vessel.
Mark Icons	Total of 10 with 10 sizes each. User may also edit any marks shape to make his own symbols.
Move Marks	Physically move marks on screen without entering any numbers.
Instant Zoom	Instant zoom to any mark on the list without scaling.
Mark Alarm	Marks can have an alarm zone set to go off when you come within range.
Making Marks	New marks can be made by present & cursor positions, or by entering the Lat.& Long., range & bearing (from sonar or radar), or Loran TD's. Also from radar cursor when connected to a radar.
Mark List	Single key speed search allows quick referencing and search for a mark by color, symbol, and/or description. Marks list allows full editing and zooming to any mark.

## PROGRAM MINIMUM REQUIREMENTS (without any options)

Computer type	IBM® Windows® 8, 7, Vista, XP, 2000pro req.(Use Pent.4 or duo-core for Radar, FishFinder or 3D Op.)
Memory	512 RAM minimum for Win98se and recommend 4 to 6 GB for Windows 8, 7, XP or Vista.
Screen type	VGA color. (16 bit color or more recommended for raster chart display, 32 bit for P-SeaBed Builder.)
Serial ports	At least 1 needed for Navigator input. When AIS, Depth, Temp., Flux compass, or Radar interface is used, an additional serial cable and COM port is required for each. An optional 4-port serial card is available or an optional 4-way multiplexer when only one serial port is possible.

NMEA0183 input	GGAP GLLP GLCP WPLP VTGP GTDP DSCP RMAP RMBP RMCP MTWP HDMP DBTP BWCP TLLP RSDP GDSP WPTP TTMP DBS*VDM
NMEA0183 output	ECGLL, LCGTD, ECWPL, ECXTE, ECBWC, ECBOD - also repeats position, HDM and VTG input shown above. (Output is not recommended for use with autopilots)

P-Sea Software Co. - PO Box 1390 - Morro Bay, CA 93443 USA Inquiries Ph(805)772-4396

E-mail: [info@p-sea.com](mailto:info@p-sea.com)

Internet: <http://www.p-sea.com>

WP2\_Cmap\_LitBkGnd2.wpd

8-5-2013